

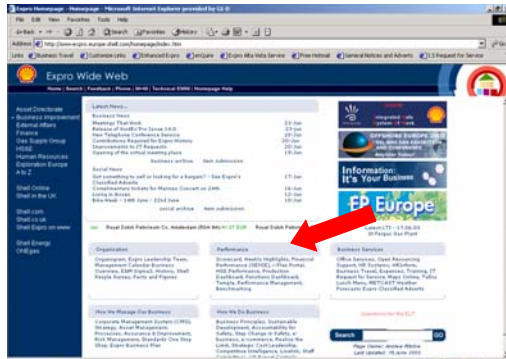
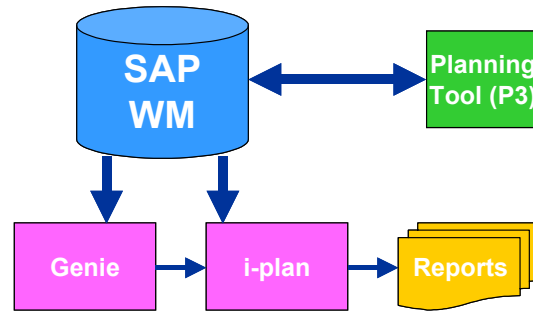
Case Study – Shell Expro / Sigma 3



Shell Expro - Managing performance with the i-plan portal

Visualising performance data, on the web, in a convenient interactive portal.

The i-plan portal delivers access to a wide range of performance management information which includes graphical data such as s-curves, expenditure trends, integrated plans of functional activities, histograms of offshore POB and a range of tabular reports from asset summaries to detailed activity phasings.



What's the best way to use i-plan?

Bill Sutherland (UEAE/2), Head of Cost and Planning explains: 'Usually you might want to start with a high level view of the Asset or Functions performance and then drill down to look at specific areas. For example, from the Asset Home Page.'

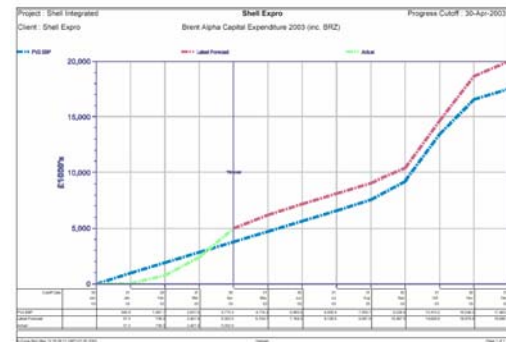
These reports are now available on the web and can be accessed from the Performance area of the Expro homepage. The reports are structured and grouped to suit the different user group needs.

Expro Integrated Activity Planning Portal Brent Asset Team			
Brent Cluster	CAPEX 'S' Curve	OPEX 'S' Curve	
Overall Cost Position (Water Consumption)			
Brent Alpha	CAPEX 'S' Curve	OPEX 'S' Curve	
Brent Bravo	CAPEX 'S' Curve	OPEX 'S' Curve	
Brent Charlie (inc. Penguin)	CAPEX 'S' Curve	OPEX 'S' Curve	
Brent Delta	CAPEX 'S' Curve	OPEX 'S' Curve	
Brent General			
Overall Planning Position			
Brent Alpha	Integrated Plan	90 Day Plan	POB Histogram
Brent Bravo	Integrated Plan	90 Day Plan	POB Histogram
Brent Charlie (inc. Penguin)	Integrated Plan	90 Day Plan	POB Histogram
Brent Delta	Integrated Plan	90 Day Plan	POB Histogram



"Call up an S-Curve to review actuals and the latest estimate trends against the Scorecard. You can view this information for an Asset Cluster, an individual Asset or specific Function."

All the data used by i-plan comes from the information that is input and maintained in SAP WM. i-plan simply pulls together, in a Business Objects environment, the information from SAP, SAP WM and Genie to create the Integrated Activity Plan (IAP) and a series of standard reports.



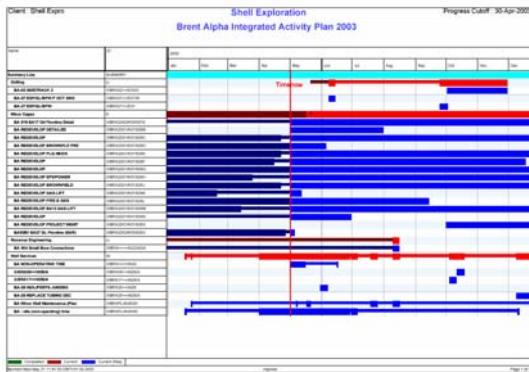
The data entered into SAP WM is not altered in any way by i-plan. The SAP WM data is simply arranged into convenient report formats to visualise the state of our business. If any errors in the data are found when the reports are reviewed, any necessary corrections are made in SAP WM.

Case Study – Shell Expro / Sigma 3

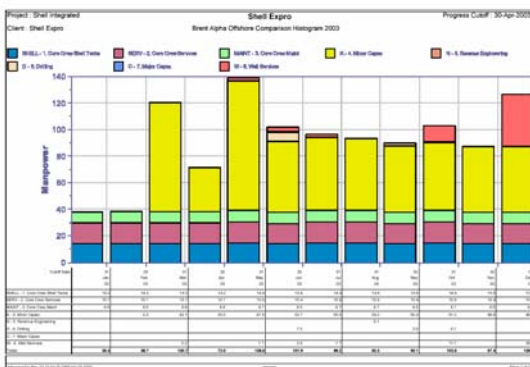


"You may then want to check your tabular Summary (or Phasing) Reports to identify how each Asset or Functional Area is performing or contributing to your latest estimate."

"Integrated Functional / Asset plans show you which activities are planned, when, and have been included in your latest estimate."



"i-plan also allows you see what beds are available and check whether there are sufficient resources to execute the work. Use the overall Asset POB view to find the information you need."



"Detailed graphical and tabular cost and manhour reports are also available and can be accessed from the Function Home Page. For Sigma 3 specifically there is an area also dedicated to reporting costs and performance for ISC activities only."

Sigma 3 embraces new technology & innovative working



To improve cost management and enable Sigma 3 to deliver reduced OPEX costs to Shell Expro by the end of 2003, the business services team at Sigma 3 is implementing new technology.

The business services team, responsible for managing cost and planning, commercial, document control and IT, is rolling out Shell Expro's i-plan programme from Monitor Project Management Systems' *mpower-suite™*.

As a web-based cost and planning system, the new software is designed to increase visibility, via graphic representation and enhance access to information.

Business Services Manager, John Bruce, explains, 'This is an important visualisation tool enabling us to more accurately forecast costs and create enhanced 90-day plans for the Engineering and Maintenance functions. Our biggest challenge is now to make sure that everyone involved in the process, including the lead engineers and maintenance team leaders, is using the system for optimum performance'.

"In our first year we dealt with shutdowns on 11 installations, a manning level peaking at 1,400 and approximately 300 live engineering jobs in the system at any one time."

About Monitor Project Management Systems
Monitor Management Control Systems' comprehensive software suite – *mpower* – delivers end to end project management solutions, supported by the company's first class consultancy and development services. The *mpower-suite™* offers seamless integration with ERP and strategic asset management (SAM) solutions.

The *mpower-suite™* incorporates the latest project management technology into a web browser interface that allows businesses to consolidate, plan, resource, gather costs and revenues for contracts and projects from anywhere in the world. The modules that make up the suite are i-contract, i-plan, i-time, i-purchase, i-bill, i-estimate, i-risk, i-maintain, i-resource and i-hr.

Monitor is an authorised provider of consultancy and training services and reseller for Maximo EAM software, and is an application partner and value-added reseller for Business Objects. Monitor is also an Oracle application partner.

www.monitor-mpower.com